

## GD SERIES GRINDER PUMP

[www.henglong.com.tw](http://www.henglong.com.tw)

### FEATURES

1. With high quality cast iron housing for the long term using.
2. To achieve the excellent performance, we use great VCT cable with Epoxy resin base, dry motor and dura-mechanical seals.
3. This series also with heavy-duty ball bearing and protector and insulation level is IP 68.
4. The special design of Non-Clog impeller which can avoid any long fiber items or other objects to block the inlet.
5. Both radial cutter and ring are made from SUS-440C material in which the hardness is reached HRC 55-60°. Any high tenacity objects such as leather, textile, plastic bags, and rope are easily to be grinded.

### APPLICATION

1. The material such as leathers, textile fiber, food and other tenacity objects can be grinded.
2. General household using, drainage systems of buildings and apartments, resorts and wastewater systems.
3. Commercial buildings, industrial factories, sewage water treatments.
4. Wastewater systems of schools, municipal engineering sewage treatments and so on are appropriate to this application.
5. Available using in various wastewater drainage systems and sewage water treatments.



GD-1212

GD-3212

GD-332

GD-352



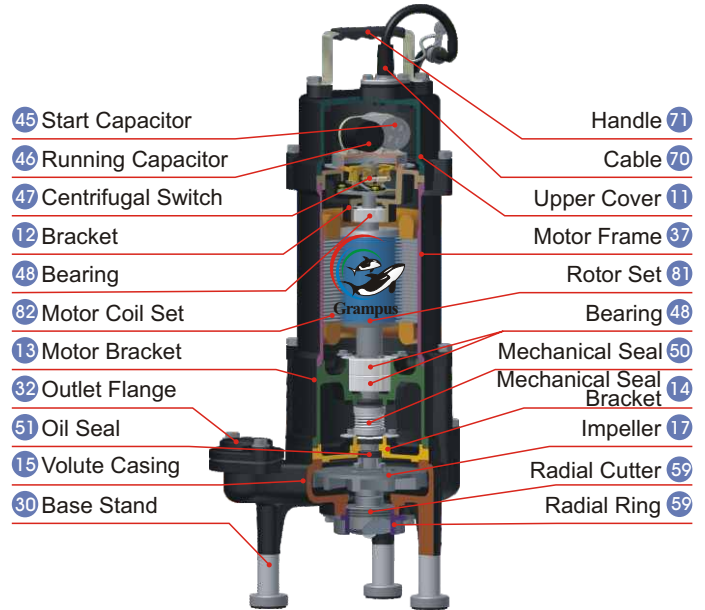
**HENG LONG ELECTRIC CO., LTD.**

# GD series Grinder Pump

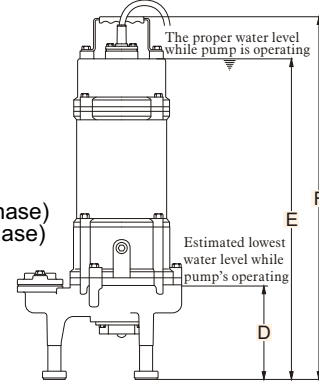
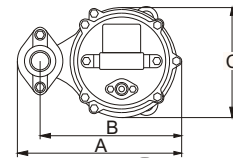
## MATERIAL AND STANDARD TABLE

Liquid	Caliber	32 mm · 50 mm	
	Temperature	0°C~40°C (32°F~104°F)	
	Application	General household, apartments, resorts, commercial buildings, industrial factories, and wastewater systems.	
	The lowest depth	▽30 M	
Pump	Structure	Impeller	Non-clog impeller
		Seal	Dual mechanical seal
	Material	Upper Cover	FC-200
		Bracket	FC-200
		Bearing	Heavy-duty bearing
		Motor Bracket	FC-200
		Mechanical Seal Bracket	FC-200
		Impeller	FC-200
		Volute Casing	FC-200
		Radial Cutter	SUS-440C
		Radial Ring	SUS-440C
		Seal	Lubricant
Motor Side	Carbon / Ceramic		
Pump Side	Silicon Carbide / Silicon Carbide		
Motor	Type	Submersible dry type	
	Insulation Class	B class (130°C)	
	Inner Protector	Auto Reset Motor Protector	
	Material	Casing	FC-200
		Main Shaft	SUS-410 / SUS-420
Cable	VCT		

## STRUCTURAL DRAWING

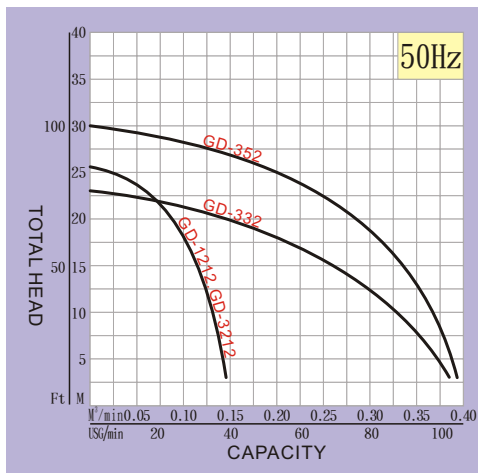


## DIMENSION

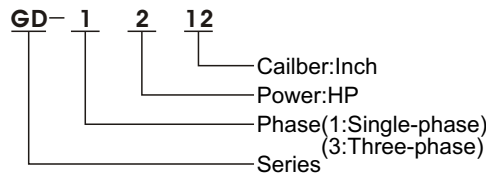


Unit:mm

## PERFORMANCE CURVE



## TYPE EXPLANATION



TYPE	A	B	C	D	E	F
GD-1212	280	240	185	155	540	605
GD-3212	280	240	185	155	490	555
GD-332	300	260	195	150	495	565
GD-352	300	260	195	155	515	585

## SPECIFICATION

Type	Frequency	Phase	Voltage	Power	Caliber	Pole / Rotation	Std.Head	Std.Flow	Max.Head	Max.Flow	Weight	Remark
TYPE	Hz	PH	VOLT	HP KW	Inch mm	P/rpm	M	M <sup>3</sup> /min	M	M <sup>3</sup> /min	KG	REM
GD-1212	50	1Ø	220	2 1.5	1 1/4" 32	2P/2850	23M	0.06	25M	0.15	36	
GD-3212	50	3Ø	380	2 1.5	1 1/4" 32	2P/2850	23M	0.06	25M	0.15	33	
GD-332	50	3Ø	380	3 2.2	2" 50	2P/2850	18M	0.20	23M	0.40	45	
GD-352	50	3Ø	380	5 3.7	2" 50	2P/3450	25M	0.20	30M	0.40	48	



HENG LONG ELECTRIC CO.,LTD.  
 E-mail: service@grampusump.com  
 Http://www.grampusump.com

Specialized Manufacturer of Submersible Pump · Made in TAIWAN

ISO 9001 Certified

- Product supported by continuously research and improvement. We reserve the right to modify and cease the specifications and accessories of all products.
- Please inform the detailed type, application, phase, power, caliber, voltage and head before order. It is easy to obtain a suitable model.
- All the specifications are subject to the products. If the voltage and frequency is specific standard, please customize in advance.

www.bomchimnhaphkau.com